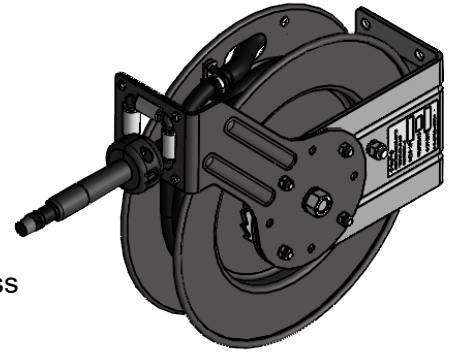


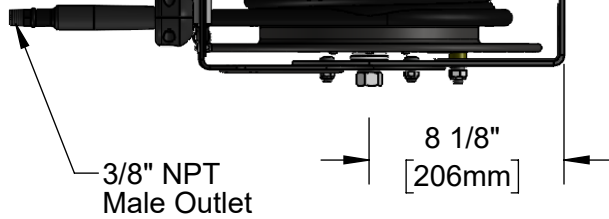
*This Space for Architect/Engineer Approval*

Job Name \_\_\_\_\_ Date \_\_\_\_\_  
 Model Specified \_\_\_\_\_ Quantity \_\_\_\_\_  
 Customer/Wholesaler \_\_\_\_\_  
 Contractor \_\_\_\_\_  
 Architect/Engineer \_\_\_\_\_

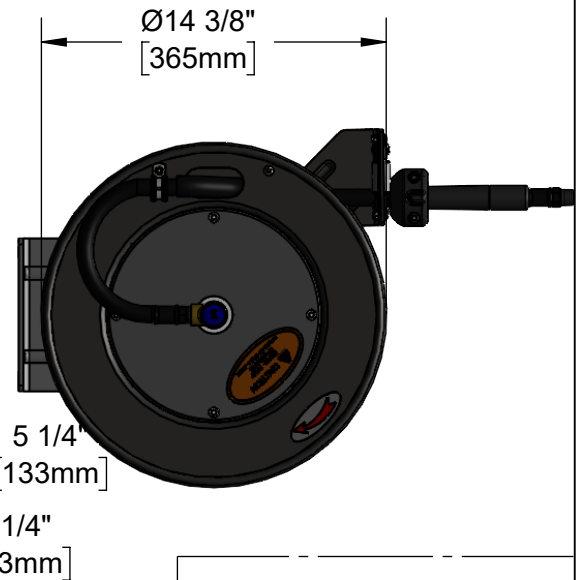
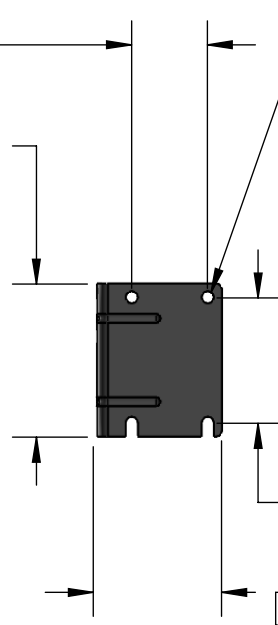
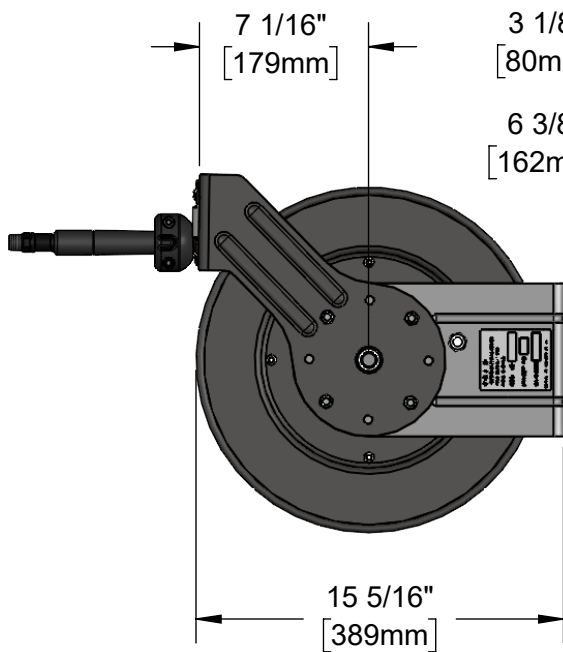


Stainless Steel Shaft & Brass Swivel w/ 3/8" NPT Female Inlet (Left Side of Reel)

Epoxy Coated Steel w/ Ø 3/8" x 35' Hose



Ø1/2" [13mm] Mounting Holes & Slots

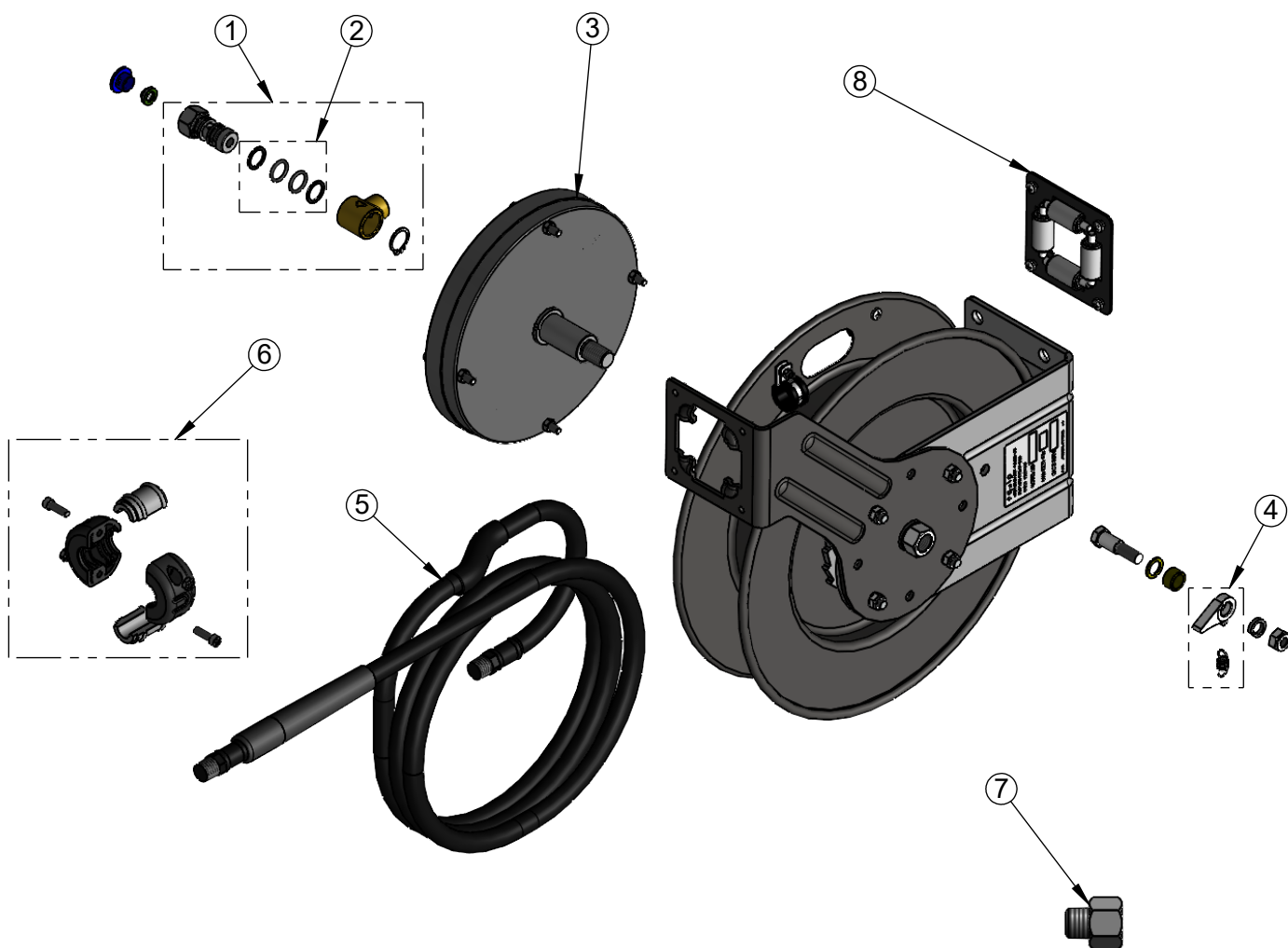


019129-25  
 Reducing Adapter  
 3/8" NPT Male x 1/2" NPT Female (Included)

|  |   |               |
|--|---|---------------|
| Model Number<br><h1>5HR-232-A</h1>                 | Product Specifications:<br><h2>Epoxy Coated Steel, Open Hose Reel w/<br/>         Ø3/8" x 35' Hose, Reducing Adapter &amp; Less Spray Valve</h2>              |               |
| Product Compliance:<br>NSF 61 Exempt (Non-Potable) | <div> <div>             equip<br/>             Foodservice<br/>             Accessories           </div> <div> </div> <div>             by<br/> </div> </div> |               |
| Drawn: MDF   | Checked: DMH  | Approved: JHB |
| Date: 10/18/24                                     | Scale: 1:6  | Sheet: 1 of 2 |

2 Saddleback Cove, P.O. Box 1088  
 Travelers Rest, South Carolina 29690  
 Phone: 800.891.4808 Fax: 800.868.0084  
 equip.tsbrass.com

| ITEM NO. | SALES NO.   | DESCRIPTION                                       |
|----------|-------------|---|
| 1        | 5HR-2SA     | Complete 3/8" Swivel Assembly                     |
| 2        | 014948-45   | Seal Kit  |
| 3        | G016682-45  | Spring Assembly                                   |
| 4        | 014940-45   | Ratchet Repair Kit                                |
| 5        | 5HR-2HSE-35 | Ø 3/8" x 35' Hose                                 |
| 6        | 019246-45   | Hose Stop Repair Kit                              |
| 7        | 019129-25   | Reducing Adapter, 3/8" NPT Male x 1/2" NPT Female |
| 8        | G016631-45  | Roller Kit  |



Model Number

**5HR-232-A**

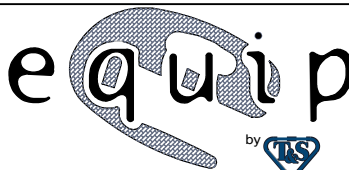
Product Compliance:

NSF 61 Exempt (Non-Potable)

Product Specifications:

Epoxy Coated Steel, Open Hose Reel w/  
Ø3/8" x 35' Hose, Reducing Adapter & Less Spray Valve

equip  
Foodservice  
Accessories



2 Saddleback Cove, P.O. Box 1088  
Travelers Rest, South Carolina 29690  
Phone: 800.891.4808 Fax: 800.868.0084  
equip.tsbrass.com