



"WE MAKE THE KITCHEN BETTER!"

ATOSA USA, INC.

Toll Free: 855-855-0399 Email: info@atosausa.com

www.atosa.com | www.atosausa.com

California, Colorado, Florida, Georgia, Illinois,
New Jersey, Ohio, Texas, Washington

Glass Door Reach-In Freezers

Standard Features

- Stainless steel exterior & interior
- LED interior lights
- Heavy duty Embraco compressor with environmentally friendly R290 refrigerant
- Electronic Temperature Controller
- Maintains temperatures between -8°F – 0°F
- Self-closing door(s) with automatic stay open feature
- Recessed door handle
- Magnetic door gasket
- Double pane glass door
- Pre-installed casters
- NEMA 5-15 plug standard
- Four(4) pre-installed shelves per section

Optional Accessories

- Extra shelves – includes 4 shelf clips per shelf
MCF8701GR shelf part #: W0402394
MCF8701GRL shelf part #: W0402394
MCF8703ES shelf part #: W0402395

MODELS:

MCF8701GR / MCF8701GRL / MCF8703ES



MCF8701GR



MCF8701GRL



MCF8703ES

For the best results of food preservation we recommend setting your freezer between -8°F to 0°F

1. Don't forget to leave the unit some room to breathe!
2. Please clean the condenser frequently to give the unit more fresh air.



2 YEAR PARTS AND LABOR WARRANTY
5 YEAR COMPRESSOR PART WARRANTY



MCF8703ES



REV. 10/24



"WE MAKE THE KITCHEN BETTER!"

ATOSA USA, INC.

Toll Free: 855-855-0399 Email: info@atosausa.com

www.atosa.com | www.atosausa.com

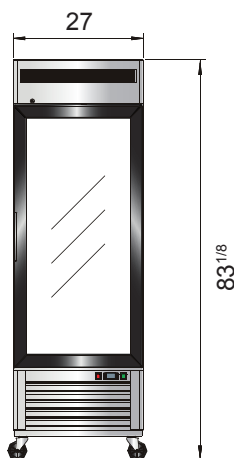
California, Colorado, Florida, Georgia, Illinois,
New Jersey, Ohio, Texas, Washington

SPECIFICATIONS

Models	Door	Capacity (Cu.Ft.)	Shelves	Casters (inch)	Rated Current (A)	Voltage (V/Hz/Ph)	HP	Refrigerant	Exterior Dimensions (inch)	Net Weight (lb)	Gross Weight (lb)
MCF8701GR	1	19.1	4	4	6.3	115/60/1	1/2	R290	27×31 ^{3/4} ×83 ^{1/8}	309	342
MCF8701GRL	1	19.1	4	4	6.3	115/60/1	1/2	R290	27×31 ^{3/4} ×83 ^{1/8}	309	342
MCF8703ES	2	44.8	8	4	8.6	115/60/1	3/4	R290	54 ^{3/8} ×31 ^{3/4} ×83 ^{1/8}	498	553

PLAN VIEW

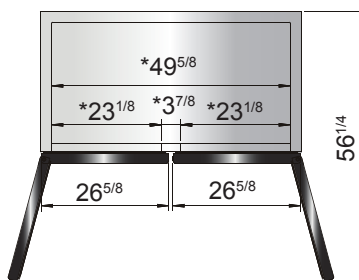
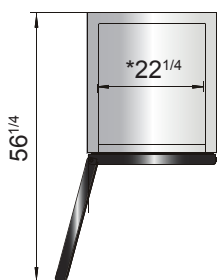
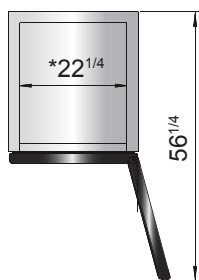
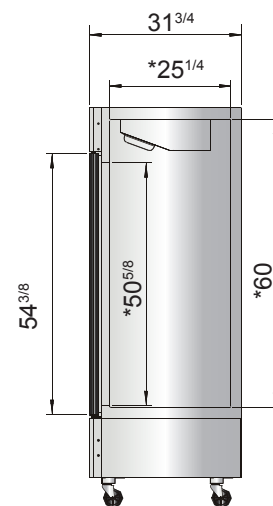
MCF8701GR



MCF8701GRL



MCF8703ES



Casters



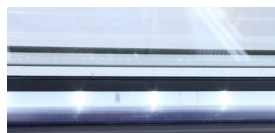
Temperature control



Door lock



LED lights



Epoxy shelves



NEMA 5-15P

